



The Human Design System

The Secret of Effortlessness

Journeying deep into our individual genetics, *The Human Design System* claims to show how every one of us has a unique design and a specific purpose to fulfil on this planet. In a most simple and graceful way, it gently nudges us away from the bustle of our everyday lives and reminds each of us why we came here in the first place. Some of the *Kindred Spirit* team have had individual readings and have found the information both fascinating and useful.

Here *Human Design* analyst **Richard Rudd** introduces *The Human Design System* in the first half of a two-part article.

Every once in a while, a human being uncovers a paragon, something that captures the quintessence of the beauty and mystery of the universe surrounding us; Mozart's symphonies for instance, or Einstein's equations.

The Human Design System is such a paragon. By unravelling the mysteries hidden within one's own genetic code, it shows how our very thoughts, feelings and longings are all part of a beautifully orchestrated pattern. To recognise this pattern clearly in your own life is to celebrate your uniqueness without fear. The result is that life can be far easier than we ever imagined possible.

The mystical origins of Human Design

In 1987 an extraordinary event took place on this planet. For the first time in recorded history it was seen with the naked eye from a mountaintop in Chile. Human beings actually witnessed a supernova. A supernova is the death of a

star, a vast explosion of such intensity that it can barely be imagined. According to the source of the *Human Design System*, that star, now known to scientists as 1987A, bombarded our planet with a deluge of subatomic information with its dying breath.

At around the same time on another mountainside, on a Mediterranean island, a man had an experience that shook him to the roots of his being. When he emerged from that experience, which lasted eight days and eight nights, he could barely remember who he was. Even his name had changed and from that moment he became known as Ra Uru Hu.

He had become disillusioned with his life as a professor of physics in Canada and sought an escape from the world on Ibiza, where he ended up living as a hermit in a ruined hut. It was here, living wild in the mountains, that Ra received *The Human Design System* from what he calls 'The Voice'. This voice gave him immensely detailed and scientific knowledge about the nature of our universe. It even had its own language, referring to human beings as 'raves'. As a sceptic and a scientist, Ra had no belief in things mystical. In fact, at the time, he didn't even know his own astrological

sign. It is difficult to comprehend exactly what happened to him during those eight days, so in his own words, this is what took place.

'I was conditioned to believe that science fiction was a genre of literature, that mystical revelation was simply a more antiquated form of the same, and that God, if not dead, was most likely a concept.

'On the evening of January 3, 1987, all that changed. I was "penetrated" by a "Voice". It was a terrifying experience. My hair literally stood on end. In the shock, a flood of water drained from my scalp.

'The Voice said: "Are you ready to work?" For eight days and nights, I worked, transcribing in detail *The Human Design System*.

(From the foreword to *The Rave I Ching*.)

The science

Despite its mystical origins, *Human Design* has its roots deeply embedded within the very latest theories in quantum physics. On a sub-atomic level we are all connected like cells within a giant body, that of the universe itself.

The Human Design System is founded upon this very premise: that the universe is a living entity, and that we are living in a vast information-feed, consisting of countless minute particles now known to physics as neutrinos. Up until a few years ago, the neutrino itself was half-fictional, in that it was simply a hypothesis. Now science has proved that neutrinos bear mass, and that they pass through us at the rate of about three trillion per square inch. Neutrinos are made in stars, like our sun, and could be seen as the modern day equivalent of what the ancients used to call 'chi' or 'prana'.

We live in a dualistic universe. The sun is our 'yang', we, the earth are the 'yin', and the neutrino is the mercurial intermediary. All life on earth is thus generated and in a sense 'programmed' by the sun and, to a lesser extent, the stars. It is also intriguing to think that not only are we humans programmed by the celestial bodies, but we also programme them as well. Remember, the neutrino is not pure energy, but extremely fine matter. Thus, every neutrino that passes through us is changed, and conveys something of who we are out into deep space. Just like the human body, every cell is interdependent upon every other cell and communicates its presence to the whole.

The synthesis

The Human Design System is a pure synthesis of the latest scientific discoveries and the wisdom of the ancients, and like any synthesis, Human Design is far greater than the sum of its parts.

On one side we have quantum physics, biochemistry and genetics, and on the other, the four of the great esoteric systems of the world: astrology, the Hindu chakra system, the Judaic Kabbalah and the Chinese I Ching. It is an alchemist's dream.

Human Design and genetics

One of the keys to Human Design is the use of the I Ching, the ancient Chinese Book of Changes, evolved more than 5000 years ago. Strangely enough, this ancient system, which charts the cycles and seasons of life, happens to bear an extraordinary similarity to the profile of human DNA - there is an exact correlation between the two disciplines.

DNA is made up of two strands of nucleotides, one strand being a perfect reflection of the other. This basic binary is also the foundation of the Yin and Yang of the I Ching. Our genetic code is also made up of four 'bases' which are arranged in groups of threes. Each of these chemical groupings relates to an amino acid, and forms what is known as a 'codon'. There are 64 of these codons in our genetic code.

Similarly, in the I Ching there are only four basic permutations of yin and yang, which are also arranged in groups of threes, known as 'trigrams'. In the same way that the two strands of our DNA reflect each other, each trigram of the I Ching has a partner, and together these create the 'hexagram', the basis of the I Ching. Just as there are 64 codons in DNA, there are 64 hexagrams in the I Ching (see Genetic Table right).

All human beings share this same basic genetic code, and yet each of us is unique. From the DNA of a single human hair, a forensic scientist can pinpoint its exact owner, out of billions of human beings. In Human Design, the four bases

of our genetic code manifest through our chemistry as four basic types of human beings; manifestors, generators, projectors and reflectors. Each type functions very differently, and will be discussed below.

Human design and astrology

Human Design also relies upon astrological calculation to configure two separate moments of imprinting within the neutrino stream. Many people new to Human Design assume that because of this it is similar to astrology. Nothing could be further from the truth. Although we draw upon the ancient science of astrology in order to arrive at the correlation with our genetics, the similarity ends there. Like astrology, Human Design produces an individual chart (known as a 'rave chart'), and like astrology this chart is calculated from the time and place of birth. However, astrological data in Human Design leads to exact placement in the body. Through the intermediary of the I Ching, the position of every planet at the time of birth gives us a 'genetic thumbprint' left in the neutrino stream.

Using The Human Design System, we can examine the nature of the forces that were gathered around us when we were born. It is as though our birth leaves a vapour trail in the ethers. We can then isolate this imprint, and transfer it into a biochemical map of the body, known as a 'Bodygraph' (see inset right).

What can we learn from Human Design?

So what is all this really about and what do these charts tell us? In a single statement: they remind us of what we already know about ourselves, deep within our hearts. Human Design is in essence a yin teaching. It shows us that human beings are primarily receptive by design. Our prime directive, if we have such a thing, is patience. Buddha used a term known as 'correct action', and this is what we manifest when we live our true nature or design. Action that does not come from harmony is desperate action, and usually does more damage than good in the world. Human Design shows us that there is no purer alchemy than simply being yourself.

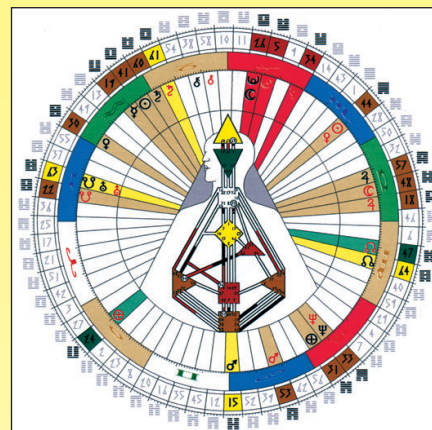
On a deeper level, it is a simple means of harmonising our individual flow within a greater flow. It is about what the ancients called 'being in harmony with the Tao'.

How does a chart work?

When you look into your own Bodygraph, it is as though you are looking at the blueprint of a car. The body is, after all, our vehicle through life. Now, consider how you might feel if you had been driving around in your faithful old car for years and when you took it to a mechanic

THE BODYGRAPH

The image below (Mozart's Bodygraph) is made up of nine information hubs linked together by a series of channels and circuits. Every channel has a name and a theme to it that describes an aspect of our nature.



Here are some simplified examples of channels that can occur in people's charts:

- The channel of transitoriness:** people who don't stay with one thing for very long.
- The channel of initiation:** people who are usually highly competitive.
- The channel of the alpha:** people who are natural born leaders.
- The channel of charisma:** people who are endlessly busy.
- The channel of the prodigal:** people who require frequent periods of retreat in their lives.

The Human Design System is symmetrical and logical, and once a rave chart is drawn up it is simple and easy both to analyse and explain.

THE GENETIC TABLE

The Genetic Table (below) represents the exact mathematical correlation between the ancient Chinese I Ching and the human genetic code.

	A	C	G	U	A	C	G	U
A	Lys A 1	Asp A 43	Lys A 14	Asp A 34	Thr C 9	Thr C 5	Thr C 26	Thr C 11
A	Arg G 10	Ser G 58	Arg G 38	Ser G 54	Isi U 61	Isi U 60	Met U 41	Isi U 19
C	Glu A 3	His A 49	Glu A 30	His A 55	Pro C 37	Pro C 63	Pro C 22	Pro C 36
C	Arg G 25	Arg G 17	Arg G 21	Arg G 51	Leu U 42	Leu U 3	Leu U 27	Leu U 24
G	G-S A 44	A-S A 28	G-S A 50	A-S A 32	Ala C 57	Ala C 48	Ala C 18	Ala C 46
G	Gly G 6	Gly G 47	Gly G 64	Gly G 40	Val U 59	Val U 29	Val U 4	Val U 7
U	Tcs A 33	Tyr A 31	Tcs A 56	Tyr A 62	Ser C 53	Ser C 39	Ser C 52	Ser C 15
U	Tcs G 12	Cys G 45	Try G 35	Cys G 16	Leu U 20	Phe U 8	Leu U 23	Phe U 2

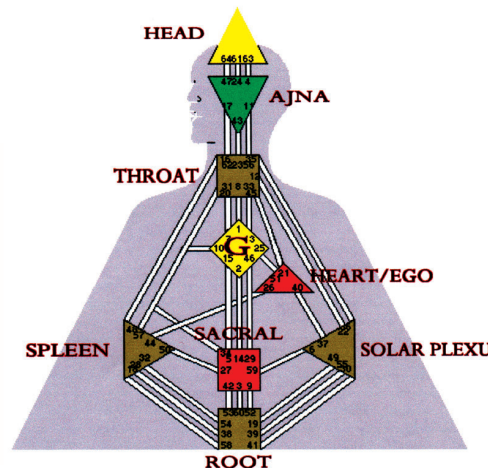
The Four Bases

A = Adenine U = Thymine C = Guanine G = Cytosine

PERSONAL DEVELOPMENT

THE NINE CENTRES

- HEAD** – Inspiration: The Pressure Centre from Above
- AJNA** – The Mind/Conceptualisation: The Centre of Mental Awareness
- THROAT** – Expression: The Centre of Manifestation
- HEART/EGO** – The Will Power Motor
- G** – Identity/Direction/Love: The 'Higher' Self
- SACRAL** – Sexuality/Creativity: The Fertility Motor
- SOLAR PLEXUS** – Emotions: The Centre of Emotional Awareness
- SPLEEN** – Defence/Cleansing/Intuition: The Centre of Splenic Awareness
- ROOT** – Kundalini/Stress: The Pressure Centre from Below



he told you that all this time you had been driving in first gear?! A *Human Design* analyst is like the mechanic that shows you how to operate your car, and having shown you, he leaves you the manual so that you can verify the truth for yourself. *Human Design* is not another therapy. This is not the kind of mechanic that will fix your oil leak for you; rather he will tell you what kind of model you are driving, and how to drive it in such a way that you will never have another oil leak again. To be yourself is to be fundamentally healthy.

What do the colours mean?

The first thing you learn from an analysis of your Bodygraph is what is fixed and consistent about your nature. This can be seen wherever there is a centre or a channel in your design that is drawn in colour (see the example of Mozart). In Mozart's design, the 'self' (the yellow diamond-shaped centre) is connected to the sacral centre (the red square) by the 'channel of rhythm'. This is in turn connected to two further channels, the 'channel of the archetype' and the 'channel of the transmitter'. When you put these three together, you have a man who is here to transmit archetypal rhythms into the world. Wherever you see colour, that represents a part of your nature that is fixed at birth.

The power of conditioning

The magic of *Human Design* is that it shows us clearly where we usually get stuck in our lives. The nature of our society is that it tends to condition us directly away from our very nature. This conditioning begins the moment we are born. According to our designs, we all fit differently into society.

Human Design knowledge is of the greatest benefit to children and parents, since knowing a child's design means that they can be guided in the direction of their nature, rather than away from it. For most of us as adults, the road back to our true nature is simple, but difficult.

The white centres

The secret of how we are conditioned in life lies in the white centres in our design chart. Wherever you see a centre or channel in your design that is not coloured in (known as an undefined centre), you are looking at something that is deeply attractive to you. The white centres are where we are not fixed; they are what we long for. At the genetic level, we are only interested in what is different from us. Look again at Mozart's chart. You can see clearly that his throat centre is the only centre that is not drawn in colour. The throat centre is where we express ourselves. What Mozart most longed for in his life was to express his music, but how and when it was

expressed was never in his hands. If he had understood this, he might have felt less frustrated in his life. Undefined centres are where we are designed to be conditioned by others.

Through understanding the basics of our own design chart, we can see exactly how and where we are conditioned by the forces around us. In this way, we can take advantage of our conditioning, rather than trying to escape it, which is an impossible task. Take the example of someone with an undefined spleen centre. The spleen centre represents our immune system and is one of three awareness centres in humans. It is our spontaneous instinct for survival. If you have an undefined spleen centre (the brown triangular centre at the bottom left) you love to be spontaneous, but there is nothing more dangerous for you than being spontaneous! If those instincts are not a fixed part of your nature, then you cannot rely on them. Some people are designed to live spontaneously, while others are designed to take more time over their decisions.

In *Human Design*, wherever there is a limitation in our design, there is also always a gift. Thus those of us who have to take longer in making up our minds can also gain a deeper understanding into our life process. In the same way, those of us who are more vulnerable and less fixed in our nature are also more sensitive and

Four types of human beings

Of the infinite possibilities that lie within our genetic material, *Human Design* shows us clearly that we humans are perhaps not as complicated as we like to think, for there are only four basic types of human being! Of course, there are millions of differences within these types, since each of us is unique. Each of the four types below operates according to a set of very simple natural laws.

- **Manifestors** are pure energy beings. They are designed specifically not to be controlled

by anyone. They often meet a lot of resistance in life because of this, and they can end up feeling very cut off from people. As with all the four types, when they understand the simple laws that govern their nature, life can suddenly be a lot easier for them.

- **Famous manifestors:** Adolf Hitler, Paul McCartney, Alice Bailey, Sigmund Freud, Elisabeth Kübler-Ross.

- **Generators** are designed to respond to life. Unlike manifestors they have no idea of where they are going until they respond. Therefore they have to wait until life initiates them first.

Generators are potentially the most powerful of all the types, but unless they understand how they work, they are the most frustrated people alive.

- **Famous generators:** Mozart, The Dalai Lama, Prince Charles.

- **Projectors** are people whose specific gift is to work with and guide the energy of others. They alone can understand both manifestors and generators. They also have a design to wait, and the key that unlocks their power is recognition. Unless they are recognised, they are powerless. Once they are recognised, they can achieve almost anything.

- **Famous Projectors:** Ramana Maharshi, Osho (formerly Bhagwan Shree Rajneesh), Karl Marx, Princess Diana.

- **Reflectors** are the rarest of the four types, since they have nothing fixed in their nature to rely upon (none of the nine centres is coloured in). These people can be the wisest people among us, since their life rhythms are directly governed by a celestial body: the moon. But if they do not understand how their design works they can feel deeply lost and overwhelmed by life.

- **Famous reflector:** Michael Jackson.

often have an uncanny ability to 'read' the people around us. These undefined white centres in our design are the places where we can ultimately attain wisdom.

Knowing and understanding our design protects us from being a victim of our own conditioning. We are all conditioned all the time, whether by the chemistry of those around us or by the 'neutrino weather' from the greater cosmic environment in which we live. Science is now increasingly showing us how we are affected deeply, not only by the moon, but also by sunspot activity thousands of miles away.

Human Design readings

As a *Human Design* analyst, one of the first things my clients usually hear from me is: 'Don't trust me, and don't believe anything I say.' The reason for this is that *Human Design* is an experiential system based on logic, and logic requires repeated testing. You have to see for yourself that it works. It has to get in under your skin and reprogramme every cell in your body with YOU. This takes a full seven years, since that is how long it takes for every cell in our body to be physically renewed. In a *Human Design* reading you will learn where your inner authority lies; that is, you will see what you can rely upon in your nature to consistently make clear and correct decisions in all areas of your life. You will also see where you are vulnerable to conditioning, whether that be through your mind, your emotions, or even through your very identity.

When you receive a personal reading from a *Human Design* analyst, this often strikes a very deep chord within you. Many things about yourself which you or others might find difficult to accept can then be acknowledged as part of your genetic code. An example might be if you have a gene which demands that you begin new things without ever finishing them. Some of us are designed this way, and as long as we understand this, we can accept it as a unique part of our nature without self-judgement or guilt. There is always

someone in the world with the opposite design - the ones who are great at finishing off what others have already begun!

Living your design

Hearing your design and living your design are two very different things. To live according to your nature takes great courage. For most people who come to *Human Design* readings, the greatest challenge is patience. You can learn to understand your design intellectually, but there are no workshops in *living* your design. That can only be learned from life itself.

To follow your design, your true nature, is to realise that your life is choreographed by forces that are far beyond the understanding of the mind. When the mysterious 'voice' began to explain *The Human Design System* back in 1987, one of the first things it told us was that the universe itself has not even been born yet. We were only conceived at the big bang. For this reason, there are many things that we still cannot know, since the full splendour of what we are has not yet been revealed. The very most we can do is simply accept the nobility of who we are as individuals, and enjoy being part of a great adventure that goes beyond our own lifetimes. This is the secret that the *Human Design System* truly offers us: that life is designed to be effortless, and that to live out your nature is to see your role in the great mythic play of life. It is to realise that the unique role you have been given is the very one you have always dreamed of. KS

MORE INFORMATION

- In the next issue we look in more depth at the four basic types of human beings: manifestors, generators, projectors and reflectors. We also explore *Human Design* as a tool for understanding relationships and health.
- Richard Beaumont is the head of the National organisation for *The Human Design System* in the UK. He is actively involved in lectures, workshops, events. If you would like a personal *Human Design* analysis from Richard Beaumont ring the National information line on 01803 861067 or go to www.humandesign-uk.com

Are you wearing your own genes?

Human Design Analysis Part two

The Human Design System

The Human Design System makes the claim, like astrology, that at the moment of birth we are genetically imprinted with a unique underlying blueprint. In that split-second as we emerge from the unseen world, like a photographic negative exposed to the light, every page of our life story is encoded in the sequence of our DNA.

The Human Design System is founded upon logic, and logic is founded upon the repetition of patterns. The cracking of the genetic code in the 1960s was perhaps the most important discovery of the last century. It shows us that there exists a fundamental universal pattern underlying all life on our planet. The revelation of *Human Design* is that these patterns can actually be clearly seen and read by means of a simple chart calculated from the time and place of your birth, a process known as *Human Design Analysis*.

Manifestors

The manifestor is a design that has one of three energy systems in the body activated in a circuit to the throat centre, the centre of manifestation and expression.

Manifestors are people of action. Of all the four human types these are the only people who are specifically designed to act without waiting. This is often a shock to people who are introduced to their true design, since the capacity to manifest and act is something we take for granted in our society. The irony is that although a vast part of our conditioning is telling us all to be manifestors, less than 10 per cent of us actually *are* manifestors.

The manifestor is by nature a lone wolf. Because they can act independently of other people, they are not designed to be controlled by society in any way. They are regarded as dangerous and unpredictable by others. The strategy that manifestors must learn is to inform before they act. For example, if you are a manifestor attending a dinner party and you have something valuable to say, your natural tendency will be to simply jump right in and say it. If you do so, you will soon discover that you are either not heard, or vehemently resisted. We are talking about living biogenetic strategies that are felt across rooms. If the manifestor simply asks politely before they speak, they immediately put those around them at ease.

If we were to create an imaginary football team out of the four types of human beings, manifestors would be the forwards. They are the talent, the ones we all like to glamourise. They are the goal-scorers. Their style is often wild, unpredictable and full of genius. But they pay a price for being in the limelight, a sense of isolation that comes from others resisting and resenting their true nature. If they can learn humility at the same time as retaining their wildness, they can live deeply fulfilling and powerful lives.

Projectors

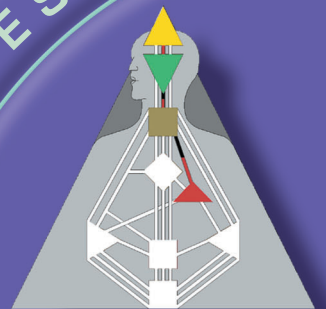
Projectors have no energy system linked to the throat, and no sacral centre connected in their circuitry. Projectors are the original mercenaries. They can do the jobs that no one else in the world can do, and if you call on them they can really deliver the goods. Projectors are the first of the two non-energy types. Obviously this does not mean that they have no energy. In fact, they have access to more energy than almost anyone else, but first they have to be recognised. The projector is waiting for 'investors' to recognise their specific talents and skills, whatever they may be.

Projectors are natural networkers, whose gift is to manage the energy of other people. For example, a projector who is a healer will be much more successful if they accept only the people who recognise their gift beforehand. Since their personal fulfilment depends on having the right people in their life, projectors have a natural gift for reading the people around them.

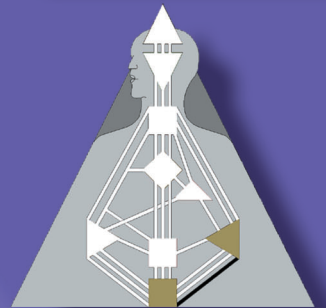
Projectors have an extremely deep need to be seen. The projector sitting at the dinner party with a group of strangers has to trust in the power of their own chemistry. Their silence will always draw the invitation of the person or people who recognise them. That is how they know who is right for them. They have to be patient. If they jump into the conversation like a manifestor they can end up feeling deeply drained by wasting their energy on people who do not understand them. When the projector trusts in the silent magic of their chemistry, many incredible opportunities begin to come their way.

In our magic football team, projectors are the midfielders. They move between the forwards and the defenders (manifestors and generators). They set up the ball for the forwards, and feed it back to the defenders. Their skill is to direct the entire game by co-ordinating with the other players as and when they are needed.

MANIFESTORS



PROJECTORS



In the previous issue of *Kindred Spirit*, **Richard Rudd** (the first *Human Design* analyst in the UK) presented a basic introduction to the *Human Design System*, a revolutionary new synthesis. It makes the claim that the true nature of any individual can be revealed through a genetic imprint determined from the time of our birth. Here Richard takes us further into this new paradigm.

Generators

Generators are designs that have a defined sacral centre, the centre of the life force itself.

If you want to see a truly powerful human being at work, you have only to watch a generator living out their true nature in the world. Generators are pure energy beings, but unlike manifestors they are not designed to initiate action. Generators are designed to *respond* to life and thus they have a design to wait. Patience is the great key for generators. Statistically, generators make up over 65 per cent of the population, which says something rather profound about human beings in general. Perhaps we need to slow down a little!

The great theme of all generators is frustration. Being a generator is akin to having a Ferrari engine under your bonnet, but being stuck in first gear. They have to wait until the gear-change is brought to them. Generators never know what is right for them unless they have first waited to respond, for their chemistry is designed to attract forces and people that initiate them and ask them. However, out of ignorance of their own nature, generators rarely manage to live out their true potential. Feeling stuck is a natural part of their process and needs to be understood as such. The generator who finds the patience to wait out their process is always deeply rewarded.

Generators need more than anything to learn to trust in the power of waiting. They are potentially the most powerful of all the four types, but for them action must first arise out of receptivity.

In our mythical football team, generators are the defenders. They are the backbone of humanity. They have to wait until the ball comes to them, and if they can accept this limitation, then they can truly excel at whatever they do.

Reflectors

Reflectors have no defined centres and no fixed circuitry. Reflectors are statistically by far the rarest of the four types. They have nothing fixed in their nature at all. In *Human Design*, the white or undefined centres in someone's chart are where we are open and vulnerable to the conditioning of others. Because of this the undefined centres represent the areas of our life where we can be the most confused and, paradoxically, where we can be the most wise.

Because reflectors are so open and unfixed in their nature, they often look for the stability of someone else's chemistry in their life. More often than not, this role is most comfortably filled for them by the presence of children, who provide an innocent aura around them. They also have a deep need to regularly have time away from people in order to clear the space within themselves.

Reflectors are also unusual in another way. The openness of their design gives them a deep affinity with the moon. Since the moon moves around the entire *Human Design Wheel* (see image) once in every month, it also opens up a regular pattern of energy in our chemistry each month. This is where reflectors can find stability. In other words, reflectors have regular cycles each month where they can live out all the other three energy types. For example, they may have three days in every month when they are a manifestor, then four when they are a generator, and so on.

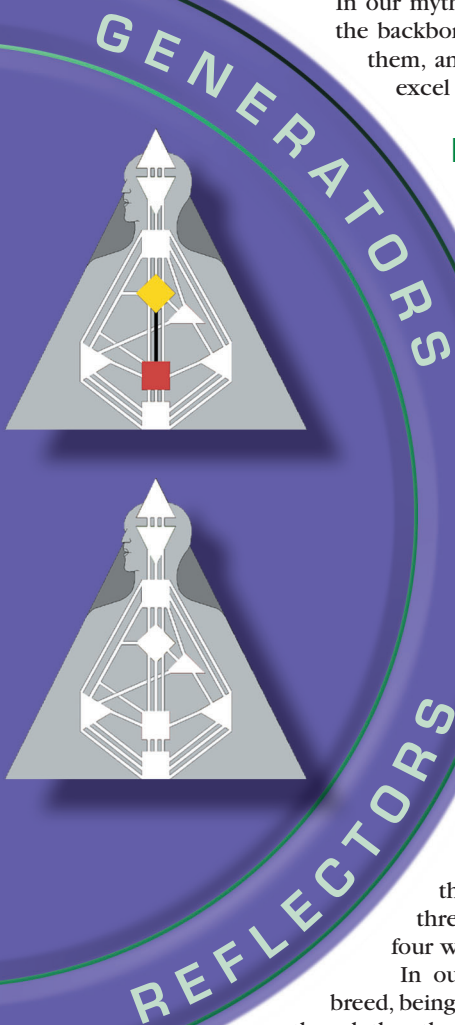
In our team, the reflector is the goalkeeper. They are a rare breed, being perhaps the most crucial single member of the team even though they themselves do not move around the field like the other players.

They operate according to different laws; for example they are able to use their hands whereas the other players cannot. They are perhaps the most limited and at the same time the most unlimited people among us, and their perspective is truly unique.

Four types of human beings

An empirical fusion of both science and esoterica, *Human Design* draws on a vast array of knowledge, including the I Ching. The I Ching is a logical binary system that just happens to dovetail symmetrically and exactly into the mathematics of our genetic code. What all this reveals is the existence of four very specific types of human being, reflecting the four basic building blocks of our DNA, known to science as the 'four bases'.

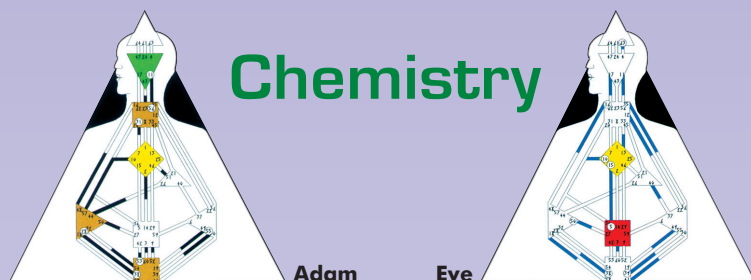
These four distinct human profiles are not simply divisions made according to psychology, nor are they personality types. According to *Human Design* they are the living biogenetic patterns that are stamped behind every cell of our bodies. They determine our health, sexuality, relationships, our dream life and even the way in which we breathe. They are the very music of our chemistry. The question is: are we in tune with them?



The four types of chemistry in relationships

Human Design and relationships:

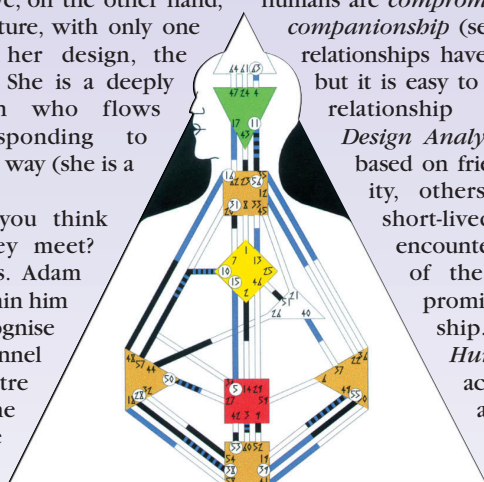
Chemistry



In a relationship we become someone else. The great revelation of *Human Design* is that chemistry isn't personal. All difficulties in relationships are because people take it personally! When two people stand within each other's aura they are no longer who they were before they walked into the room. Look at the composite chart of the two people below. You can see that two perfectly normal human beings (but for the fact that they are made up) turn into one whole new creature with its own unique design and chemistry. Now let's have a look at how this works through the lens of a *Human Design* reading.

First of all, wherever you see colour in someone's chart, you are seeing what is fixed in their nature. The centres in white are the aspects of our life that we cannot rely upon since they are *not* fixed. So we can see that Adam is a strong mental type (the green centre in the head), and that since he is a projector, he needs someone to recognise him for this and to engage him intellectually. Eve, on the other hand, has a very open nature, with only one fixed channel in her design, the channel of rhythm. She is a deeply rhythmical woman who flows through life responding to whatever comes her way (she is a generator).

And what do you think happens when they meet? Chemistry happens. Adam has a real depth within him that few people recognise (the little black channel in his spleen centre that looks towards the throat). Eve on the other hand, has an undefined (white) throat centre



Adam and Eve in relationship

with the opposite end of the channel to Adam. She has the skills to express her talent, but is always waiting for someone to bring her the depth. This entire channel is called the 'channel of talent', and that is one of the themes of their particular

chemistry together. Eve 'borrows' Adam's chemistry to finally express her voice, whilst Adam 'borrows' Eve's skills and finally gets to express all the deep ideas that he probably didn't even know he had!

There are many types of chemistries that manifest between two people. The couple below also have a deep emotional connection together (the brown centre on the right), which neither of them have when they are alone. This channel 39/55, the 'channel of emoting', is a deeply romantic and specifically acoustic connection between our couple. It creates a moody chemistry between them, which means that if they stay together they will be the kind of couple who are always falling in and out of love with each other. These types of connections, when two different aspects of our chemistry create a whole new circuit, are called *electromagnetic*, since they create sparks between people. These sparks can be love, or they can be hate.

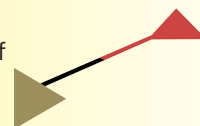
Other types of connections between humans are *compromise*, *dominance* and *companionship* (see panel right). Most relationships have a mix of them all, but it is easy to get a flavour of any relationship through *Human Design Analysis*. Some are more based on friendship than sexuality, others are steamy but short-lived, others still can encounter troubles because of the balance of compromise in the relationship. According to *Human Design*, there is actually no such thing as 'good' or 'bad' chemistry. Any relationship can be manageable and fulfilling as

long as both parties understand that the true dynamic cannot be taken personally. Many of us fall into the trap of trying to change the people around us, instead of understanding that our genes are simply what they are.

1 Electromagnetic: The chemistry of love

When two people have the opposite ends of the same channel.

This is what is described as the 'sparks' between people. Love/hate, attraction/repulsion.



2 Compromise: The chemistry of yielding

When one person has one half of a channel and the other has the whole channel, frustration can arise.

For example, if one of them has a whole communication channel and the other has the same channel half full, the person with half a channel may feel like they have to wait for the other person to finish speaking before they can be heard. This combination is not necessarily negative and can be overcome with compromise and understanding.



3 Dominance: The chemistry of others

When one person has a whole channel and the other has nothing in that channel.

This chemistry enables us to differentiate between our own patterns and those of others. From there we either accept them, learn from them or leave them!



4 Companionship: The chemistry of balance

When both people have the same channel. The most comfortable chemistry between two people, and the source of friendship.

Too many of these however, and you may become bored!



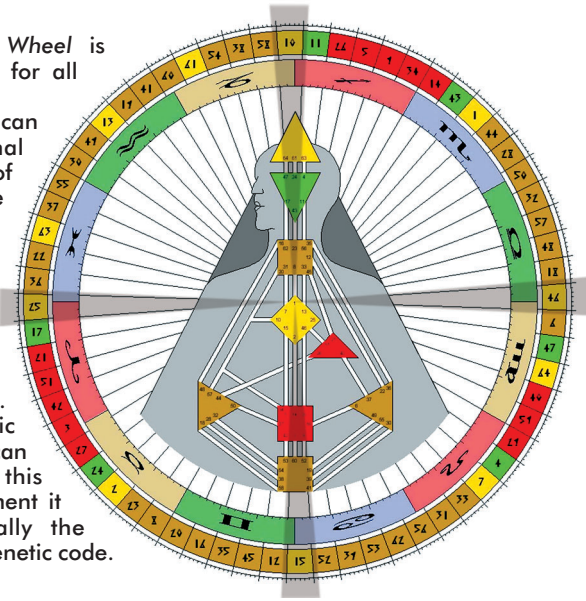
The Geometry of Incarnation

Most of us tend to think of the idea of 'reincarnation' as a concept that we have inherited from the East, but it is not the case. In the days before Christianity, much of the Western world shared a common belief in what was called 'the transmigration of the soul'. Both Pythagoras and Plato developed theories of reincarnation, as did the Druid priesthood of Western Europe. Furthermore, both of these schools of thought had a very profound knowledge of geometry; the Ancient Greeks through their love of mathematics and music, and the Celts through the precise astronomical observations embodied in the great stone circles of Europe.

At the heart of the *Human Design System* also lies a single matrix that claims to represent the unfolding of the entire evolution of life on our planet. This is the image of the Wheel (see right). Every single type of chart that can be calculated by the *Human Design System* originates somewhere in this Wheel.

The *Human Design Wheel* is a universal mandala for all known life.

In the Wheel, we can see the traditional astrological division of the zodiac into the twelve basic signs that we all know. However, in *Human Design* there are 69,200 permutations going around the Wheel. As the Wheel turns, so life evolves. Every single genetic combination of life can be traced within this Wheel from the moment it is born. It is literally the stringing out of our genetic code.



Incarnation Crosses

According to the source of the *Human Design System*, there are no such things as old souls and young souls. We all began our journey together at the same time, with the Big Bang. We are a growing entity. Each one of us is a cell within the giant body of the universe and no single cell is more important than any other. We simply filter different aspects of the whole. In *Human Design Analysis*, when you come to a deeper level of reading (the 'Incarnation Cross'), we are looking beyond our mere behavioural patterns and out into the cosmos. It is here that we find our life purpose and our destiny. In the language of *Human Design*, it is where we see our 'geometry'.

Without getting too technical, this is how it works: in *Human Design* our basic

duality is represented by the position of both the Sun and the Earth at our birth. The Sun is what we inherit genetically from our father, and the Earth from our mother. In the Wheel, these two are always exactly opposite each other. Furthermore, in *Human Design* we have two moments of imprinting: one when we are born, and one 88 degrees (about three calendar months) of the zodiac prior to our birth.

Thus every birth chart is made up of four archetypal forces which form a cross in the wheel (see above). This slightly offset cross (since it is 88 degrees rather than 90) is called our Incarnation Cross. Each Incarnation Cross has a name and a specific purpose (see right). Again, there are many thousands of variations of these crosses.

Each Incarnation Cross is a fractal archetype of our true purpose during any lifetime. Below are some simplified examples:

The Cross of The Laws: people who enforce laws or bring new laws.

The Cross of Eden: people who embody wisdom through the loss of innocence.

The Cross of Denial: people who bring boundaries through denial.

The Cross of Healing: people who are here to heal and/or be healed.

The Cross of the Clarion: people who are here to bring a new message into the world.

The Cross of the Sleeping Phoenix: the coming of spirit

There is a buzz word in genetics: 'mutation'. Mutations are basically variations that are made when our genes replicate themselves. Mutations are a key to evolution for it is these changes in the geometry that ultimately create new variations within species. It was a mutation in the larynx that separated homo sapiens from our primate ancestors, since it gave us the ability to express complex sounds and, eventually, language. According to the source of the *Human Design System*, humanity is almost ripe for its next major mutation.

As was mentioned earlier, the *Human Design System* claims that in the mandala of the Wheel lies the key to the evolutionary pattern of all life on our planet. By tracking the movement of the precession of the equinoxes through the Wheel we can actually watch the greater unfolding of humanity itself. For the past 385 years, we have been moving through an area of the Wheel that has to do with the

creation of a global community. The results of this can easily be seen today.

In the year 2027, our global cycle will trigger a new role for the Incarnation Cross known as 'The Cross of the Sleeping Phoenix'. According to the source of the *Human Design System*, this Cross is holding a dormant potential. For countless millennia the Phoenix has slept, hidden away somewhere in our genes, waiting for its moment. We are told that in the year 2027, this dormancy breaks and the first children will be born carrying the awakening Phoenix as a physical genetic mutation. If it is true, it would be an extraordinary moment in the history of our species, for it is this very mutation that brings with it the permanent awareness of the realm of spirit. It is the Phoenix that holds the final great mutation for the body of humanity, for it promises the ultimate flowering of our consciousness as a species.

MORE INFORMATION

- Since this article was written The Human Design System has taken its first steps towards being fully recognised as a new science. A controlled research programme led by qualified MDs in the USA has statistically proven through thousands of case studies that the human genetic strategies outlined above have a solid, scientific foundation.
- There are organisations throughout the world for the Human Design system, in the USA, Austria, Spain, Japan, Australia, Italy, Russia, Ukraine, Greece and many more.
- Richard Beaumont (a fully accredited Human Design Analyst with many years experience) is the head of the National organisation for The Human Design System in the UK. He is actively involved in lectures, workshops, events and producing new information on The Human Design system.
- For further details or to download your own Human Design chart visit the national website: www.humandesign-uk.com
- If you would like a personal Human Design analysis from Richard Beaumont or more details ring the main Human Design UK number: 01803 861067.